

# 1 WHO WE ARE

**EurofamNet** is a bottom-up, evidence-based, multidisciplinary network that aims to improve the lives of children and families by informing family policies and practices in Europe.



**165 participants**

136 full members  
29 associate members

**35 countries**

**12 European organizations**

**EurofamNet CA18123** (The European Family Support Network) was established as a multi-sectoral, multi-disciplinary action under the EU COST programme in 2019. Through a dynamic network of academics and policy and practice stakeholders, we aim to build the field of family support.

## 2 OUR GOAL

**Include an explicit and significant focus on family support in policy and practice for children and young people.**

### The rationale

- Family is the primary social structure through which the needs of children and young people are met and their rights achieved.
- Most EU policy relating to children and young people is mediated through family even if this is not explicitly named.
- Early intervention and preventative approaches in policy and practice focused on children and young people invariably involve a significant role for parents, guardians and other family members.
- The right to family life as enumerated in the UNCRC is a key right for all children and young people.
- The Covid-19 crisis has reinforced the significance of family for children and young people, both positively and negatively. Even when family is not safe, parents and other family members are central to State interventions.
- When it is not safe for children and young people to live with their birth parents, family-based care is the preferred option in policy and practice.

### The implications

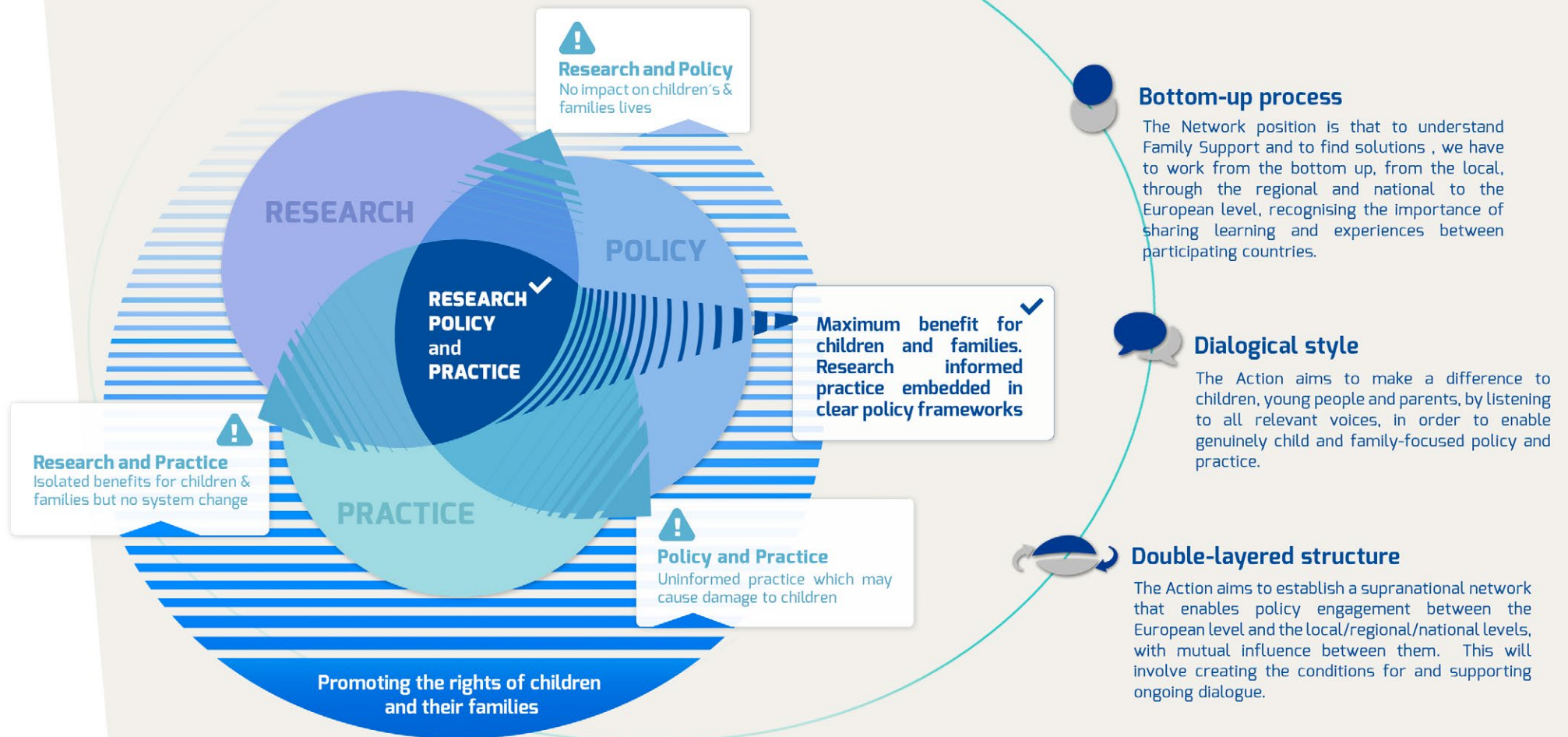
- Name and explicitly refer to the role of family in policies for children and young people.
- Build strong, comprehensive support to families across all policy areas.
- Increase the capacity of the human services workforce to work in ways that strengthen families and their capacity to support the development of children and young people and recognise their rights.
- Implement evidence-informed programmes and practices that support parents and families to meet children and young people's needs and achieve their rights.
- Ensure the ongoing participation of children and young people, parents and other family members in the formulation, implementation and review of policy and practice responses.
- Recognise the self-defined and diverse nature of families reflecting family size, membership and structure, and different experiences relating to culture and ethnicity, socio-economic status and specific needs and challenges faced.
- Support scientific, multi- and interdisciplinary research focused on developing the field of family support.



# 3 HOW WE WORK

Achieve policy influence via research reports and policy briefs, seminars and webinars, targeted policy materials and events.

The Research Policy Practice Diagram for Promoting Effective Work with Families:



# 4

## OUR WORK TO DATE

### Mapping the landscape of family support policy and provision at national and EU level:

- Map of the relevant European actors in family support: [MORE INFO](#) [TOOL](#)
- Report on the contexts, current developments, and policy actions in the area of child and family support in 27 countries across Europe: [TOOL](#)

### Conceptualising family support in theory and policy:

- Review of international and European policy and provision standards and frameworks related to family support, parenting support and children's rights: [MORE INFO](#) [POLICY BRIEF](#)
- Review of the recent academic literature which considers the ways in which formal family support is conceptualised, developed, and delivered in the European context: [MORE INFO](#) [VIDEO](#)
- A framework for child and family support in Europe. Building comprehensive support systems: [POLICY BRIEF](#)

### Developing a resource base on evidence-based programmes, quality, and evaluation standards:

- Interactive map of international agencies on programme evaluation and quality standards: [MORE INFO](#) [TOOL](#)
- Position on evidence-based family and parenting support evaluation strategies: [MORE INFO](#) [POLICY BRIEF](#)
- Position on quality standards for family support programmes: [MORE INFO](#)
- Map of adoption of evidence-based standards in a sample of 18 countries: [POLICY BRIEF](#)
- Interactive catalogue of family support programmes across Europe: [TOOL](#)
- Narrative review of the use of information and communication technologies in family support across Europe: [MORE INFO](#)

### Creating an understanding of competences and quality standards for family support practice to inform education and training provision:

- Interactive map of international agencies on family support workforce skills standards: [MORE INFO](#) [TOOL](#)
- Review of academic literature about how workforce skills in family support are conceptualised and researched: [MORE INFO](#)  
[SYSTEMATIC REVIEW REPORT](#)  
[POLICY BRIEF](#)  
[VIDEO](#)  
[BOOKS REVIEW](#) [POLICY BRIEF \(BOOKS REVIEW\)](#)